

What Finna Could Offer for Digital Humanities



FINNA

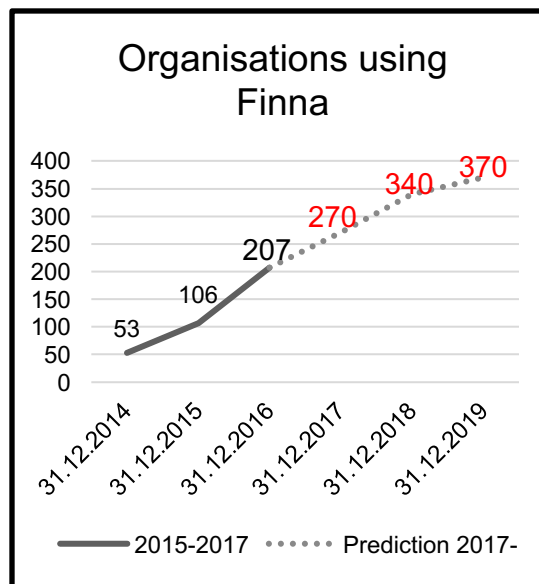
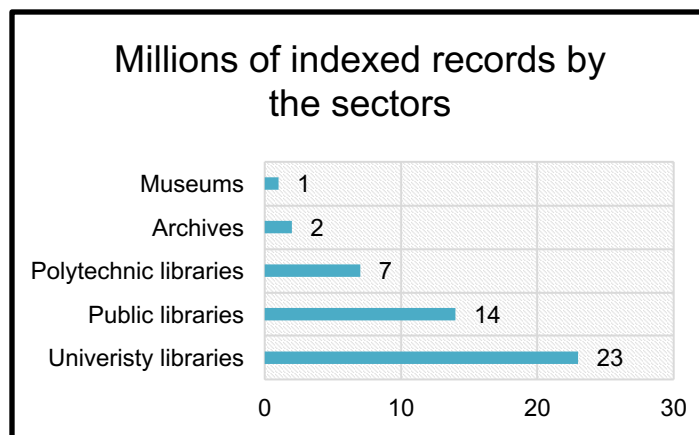
Erkki Tolonen
Piia Naukkarinen
18.10.2017

- The **user interface** of **National Digital Library**.
- One of the key infrastructures for culture and research
- A project to ensure that electronic materials of Finnish culture and science are
 - managed with a high standard
 - **easily accessed**
 - securely preserved
- Collaboration with the **Open Science and Research Initiative**


Finna.fi

- **+13 million** unique descriptive metadata records.
 - (≈ 47 million records in whole index without deduplication)
 - License of metadata: **CC0**
- **+1,7 million** records with linked online material.
- Material provided by **+250** libraries, archives and museums.

Growing>>>

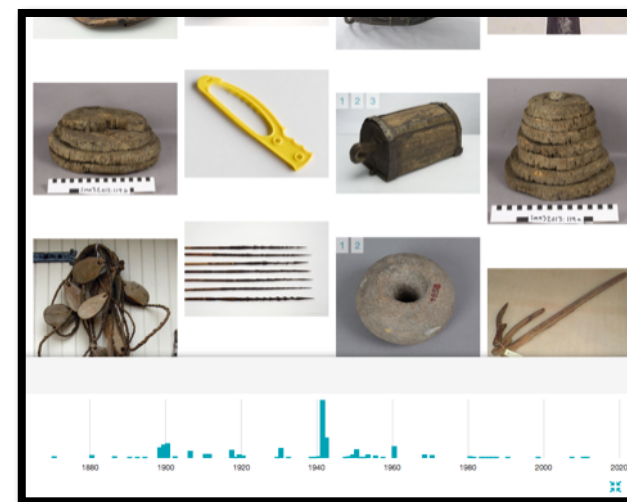


Quality of metadata is good

- Marc 21, LIDO, EAD, FORWARD, DublinCore
 - Produced by professionals 
 - Metadata is rich
 - Metadata is normalized in indexing process
 - Dating of the objects, Format, Online availability, Permitted uses, Geolocation
- Example:
Physical objects + subject: Fishing
results in time line>



Eino Heinonen, Helsinki City Museum
<https://finna.fi/Record/hkm.HKMS000005:km0000mloe>

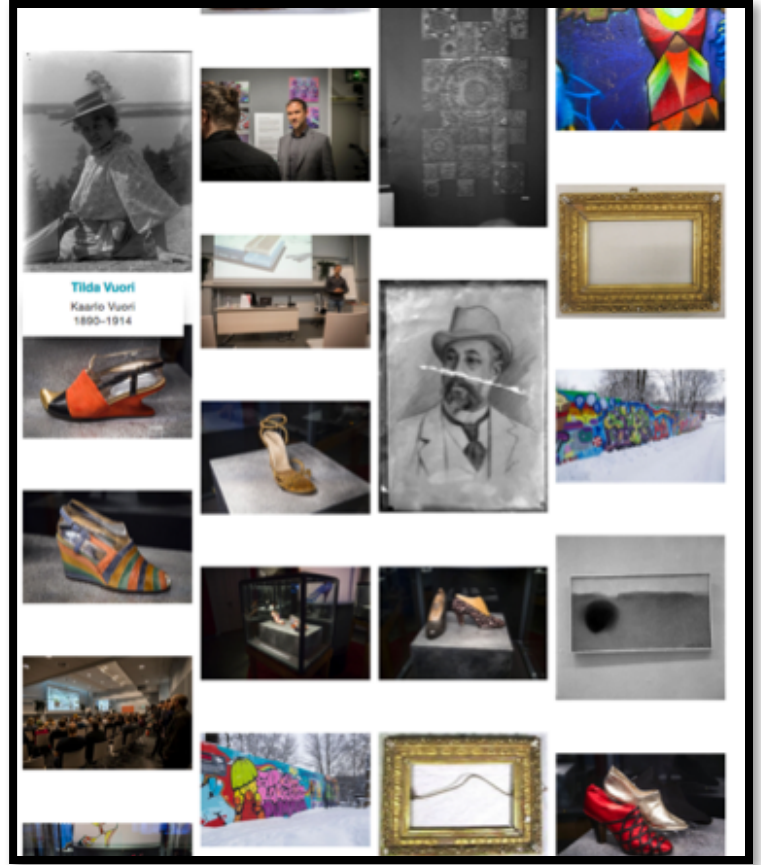


Metadata – Libraries (\approx 10 million)

- Mainly *MARC 21* (+ 8 million) + *DublinCore* records
- Books, Journals/Articles, Musical scores...
- \approx 480.000 available online (Thesis, e-books, e-articles, Musical scores and music recordings)
- Fennica, National bibliography (\approx 1 million)
 - books from 1488, newspapers from 1711, ...
- Viola, The National discography of Finland (\approx 140.000)

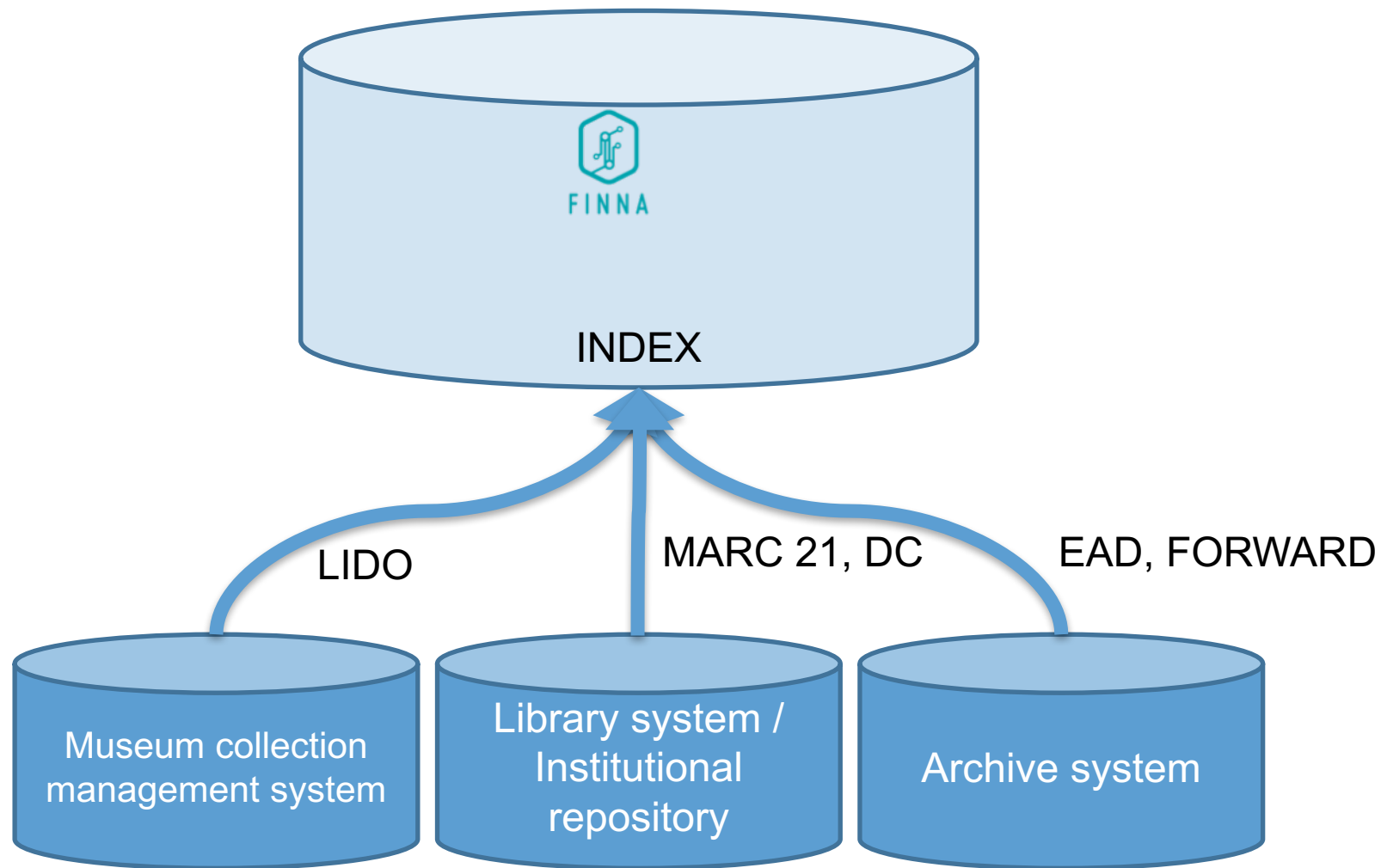
Metadata – Museums (+ 1 million)

- *LIDO*
- Images, physical objects, Books, works of art, documents, places, ...
- Online accessible image files (+1 million)
- + 500 000 images under CC-licenses



Metadata – Archives (+2 million)

- Mostly from the National Archives
- +220.000 records with linked digital objects
- Archive documents, Images, Videos, Sound recordings, ...
- Metadata will be better in near future: AHAA-project has created common descriptive services for the Finnish archival sector.



GOAL: Enabling re-use and new ways to use Finna data



CC BY

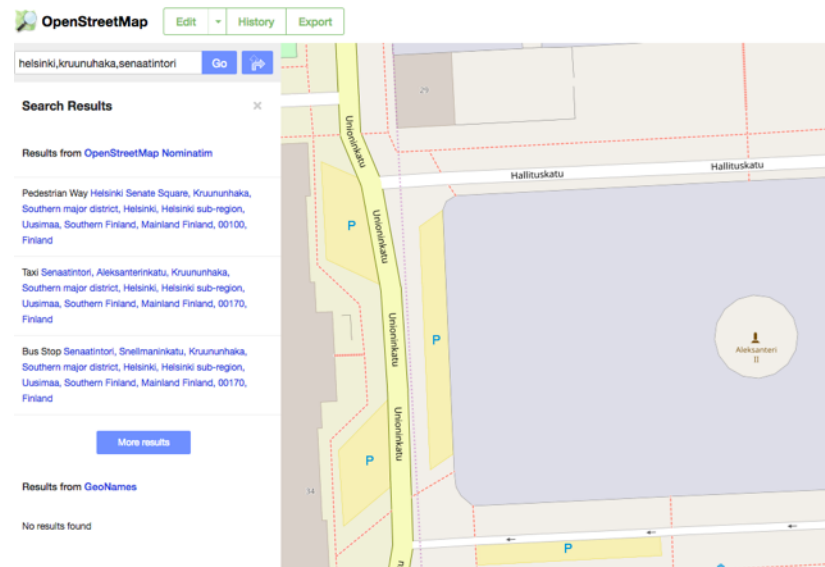
Väinö Kannisto, Helsingin kaupunginmuseo, <https://www.finna.fi/Record/hkm.HKMS000005:km0000lfq8>

Enriching images with geo-coordinates

1. The place name is found in descriptive metadata while indexing
2. Finna queries from OpenStreetMap: Is there entry for this place?

LIDO-metadata → "Helsinki, Kruunuhaka, Senaatintori" OpenStreetMap

```
<place>
<namePlaceSet>
<appellationValue>Helsinki
</appellationValue> </namePlaceSet>
<partOfPlace><namePlaceSet>
<appellationValue>Kruunuhaka
</appellationValue></namePlaceSet>
</partOfPlace>
<namePlaceSet>
<appellationValue>Senaatintori
</appellationValue>
</namePlaceSet>
</partOfPlace>
</partOfPlace>
</place>
```



Enriching images with geo- coordinates

3. If there is geodata, Finna will index it with the original metadata

OpenStreetMap Nominatim



Finna index:

location_geo

```
POLYGON((24.9511974
60.1697246,24.9512091
60.169739,24.9512413
60.1697488,24.9522441
60.1697741,24.9532273
60.1697956,24.9532725
60.1697825,24.9533103
60.1697589,24.9533457
60.1693049,24.9533196
60.1692788,24.9532705
60.1692659,24.9532261
60.1692638,24.9519756
60.169237,24.9512999
60.1692209,24.9512594
60.1692382,24.9512427
60.1692528,24.9512366
60.1692791,24.9512339
60.1693095,24.9511974
60.1697246),(24.9521254
60.1695039,24.9521401
60.169477,24.9521743
60.169455,24.9522228
60.1694412,24.9522784
60.1694376,24.9523323
60.1694449,24.9523767
60.169462,24.9524045
60.169486,24.9524116
60.1695138,24.952397
60.1695405,24.9523627
60.1695626,24.9523143
60.1695764,24.9522586
60.16958,24.9522047
60.1695727,24.9521604
60.1695557,24.9521326
60.1695315,24.9521254 60.1695039))
```

>> Finna Street



Openness enables re-use and the innovative development of services

- Open source
- **Open interface (API)**
- **Open metadata**
- **Open content**

-
- **Api.finna.fi:** Descriptive metadata of over 13 Million entries from **Finna.fi**

API.FINNA.FI

- Easy to use.
 - Search query parameters can be seen in use with the normal web interface: finna.fi
 - Swagger documentation: api.finna.fi
 - REST/JSON
- No need for API-key

Digital humanities?

- The metadata
 - Rich
 - Normalized
 - Open + a wealth of open content
 - It covers most Finnish archives, museums and libraries
- There is API

... but

- there is no way to access the index as a whole and download it for further processing
 - Development task for 2018
 - OAI-PMH?

