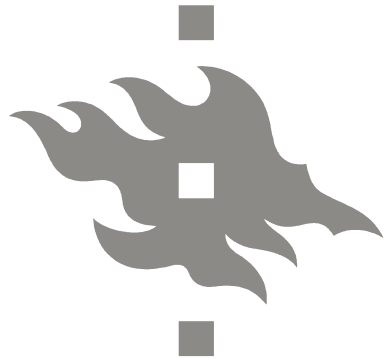
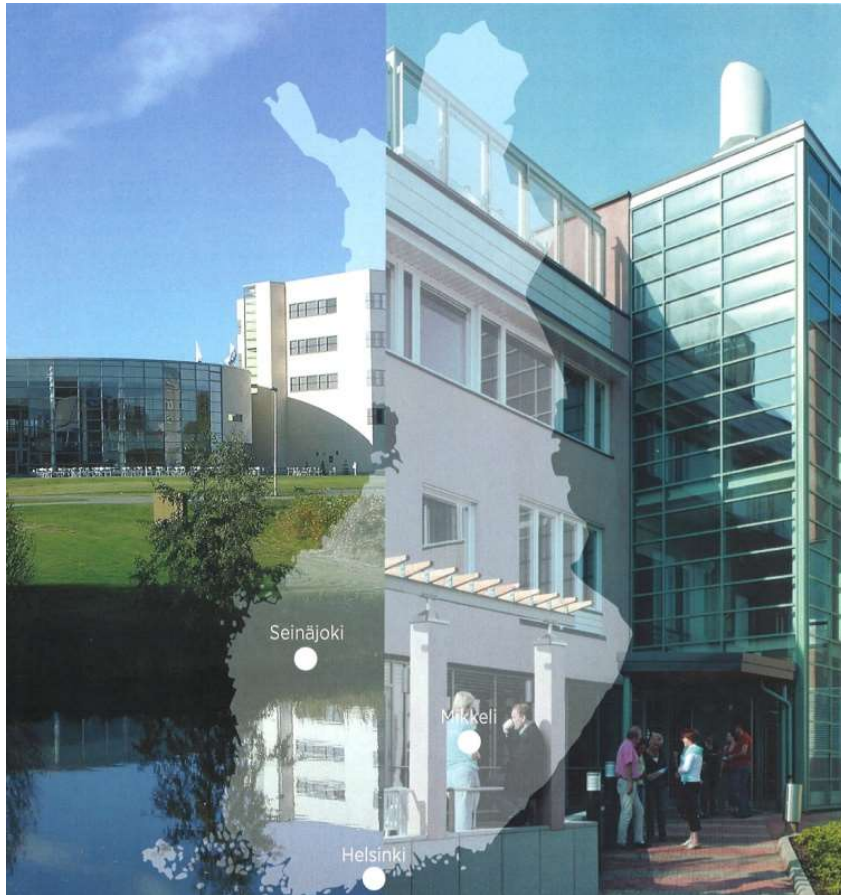


■ Research on Digital Transformation and Resilience

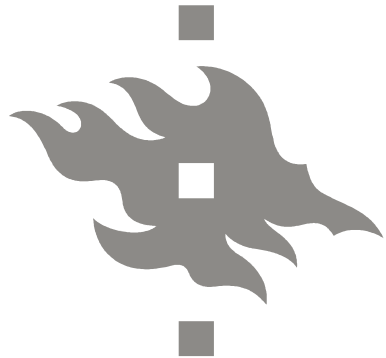
Towards Consumption of Local Digitalities



Ruralia Institute – an introduction



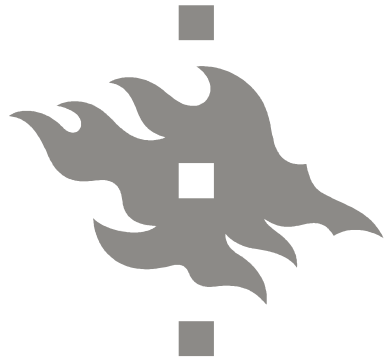
- An independent institute under the University of Helsinki, Faculty of Agriculture and Forestry (Units: Mikkeli & Seinäjoki)
- The Institute studies sustainable development - the shifting relationship between the global and the local from a rural perspective, the focus of research:
 - Local development
 - The sustainable food chain
 - The changing bioeconomy



Ruralia Institute & Research on Digital Humanities

- Current perspectives on digitalisation:
 - **Urban-rural relations**
 - Digitalised newspaper data - from 1860 to 2010
 - **Social media and policy implications**
 - Social media in local municipalities; how do decision makers utilise it in debates and citizen forums?
 - **Digital transformation and consumption**
 - The everyday implications of digitalisation; "Digital Experiences through Animations: Creative Research Interventions"





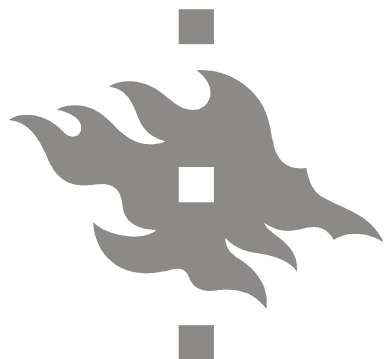
Ruralia Institute & Research on Digital Humanities



Virtual - digital virtual - material? How do digital experiences shape our worldview, work and consumption?

Localised digitalities? How the combinations of digital experiences shape everyday practices?

Practical and people-centred development?
Drivers of digitalisation are mainly effectivity, cost-saving and competitiveness...



Thank you!

Contact information

Toni Ryynänen
Senior Researcher
+358 50 311 9398

toni.ryynanen@helsinki.fi

Torsti Hyyryläinen
Research Director
+358 44 308 5322

torsti.hyyrylainen@helsinki.fi

http://www.helsinki.fi/ruralia/index_eng.htm